

Alfred Cioffi

Catholic Priest; Archdiocese of Miami

Doctorate in Moral Theology; Pontifical Gregorian University, Rome

Doctorate in Genetics; Purdue University, Indiana

Associate Professor of Biology and Bioethics; St. Thomas University, Miami

Chaplain, Miami Guild, Catholic Medical Association

Chaplain, Miami Council, Knights of Columbus

Spiritual Moderator, *Rescate* Prison Ministry, Archdiocese of Miami

Board of Advisors, Catholic Health Services, Archdiocese of Miami

Board of Directors, Respect Life Ministries, Archdiocese of Miami

# CATHOLIC BIOETHICS

- Judeo-Christian Theological Anthropology
- Contemporary Catholic Bioethics
- We are not alone in this sacred task

## Judeo-Christian Theological Anthropology:

- Biblical
- Theological
- Philosophical
- Biological

[acioffi@stu.edu](mailto:acioffi@stu.edu)

# Judeo-Christian Theological Anthropology:

## Biblical

- Old Testament:

Created in God's Image; male and female  
(Gn 1,27)

- New Testament:

Incarnation; created in Image of Christ  
(Jn 1ff; Mt 1ff; Lk 1ff; Mk 1ff)

# Judeo-Christian Theological Anthropology:

## Theological

Dignity and sanctity of human life

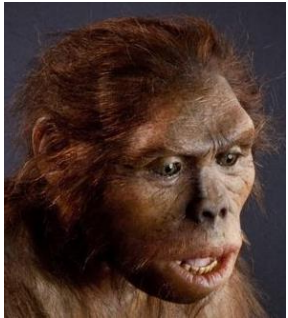
- Ontogenetically: from conception to natural death
- Phylogenetically: human genome, patrimony of humanity

Comes from God -> we belong to God and He to us

[acioffi@stu.edu](mailto:acioffi@stu.edu)

Hominins include: Australopithecines and Homo genus (fossil record ~ dozen diff spp)

H. habilis



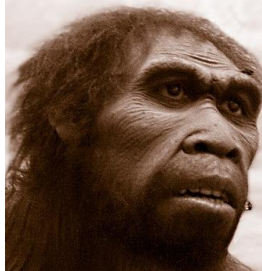
2.1~1.5 Mya

H. rudolfensis



~1.9 Mya

H. ergaster



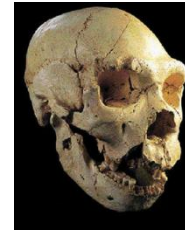
1.9~1.3 Mya

H. erectus



1.9~0.2 Mya

H. heidelbergensis



1.3~0.2 Mya

H. neanderthalensis



0.6~0.004 Mya

0.2 Mya – Present: Anatomically modern man

## Judeo-Christian Theological Anthropology:

Philosophical

Person = *prosopon* (Gk) = mask

acioffi@stu.edu

## Judeo-Christian Theological Anthropology:

Biological

Life begins at fertilization (universal)

Life ends when vital organ(s) fail irreversibly

“form follows function”

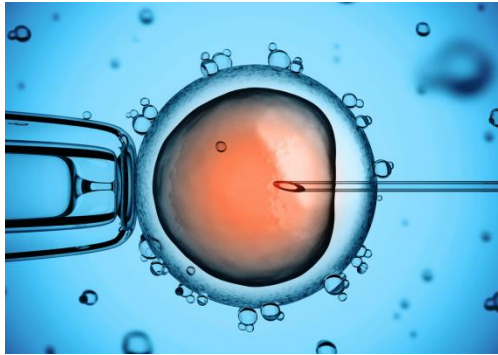
brain / mind



acioffi@stu.edu

## Contemporary Catholic Bioethics:

- Beginning of human life
- End of human life
- Middle of human life: healthcare
- Care for the environment



acioffi@stu.edu



EXPLORE  
End-of-Life Care

**VICTORY!**

\*\*\*\*\*  
Hawai'i Authorizes  
Medical Aid  
in Dying!

SIGN UP FOR MORE  
INFORMATION

\*Email Address  
\*Zip Code **JOIN NOW**



2017 Fall Magazine  
DOWNLOAD YOUR COPY



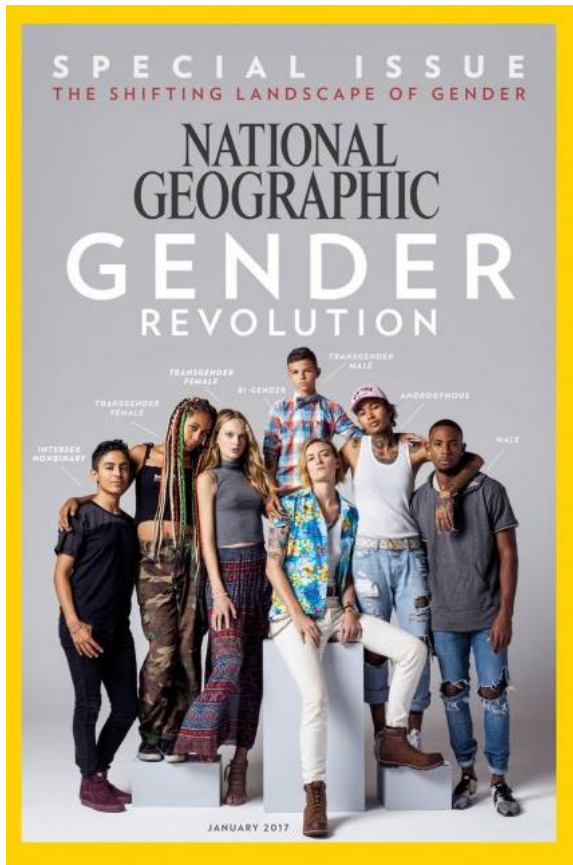
Truth in Treatment™  
CHECK OUT THE NEWEST TOOL



Ensuring Compassion & Choices'  
Enduring Legacy  
LEARN MORE

Activate W  
Go to Settings

We are not alone in this sacred task  
*Sacramentum (Ln) = Mysterion (Gk)*





*“Life is not a problem to be solved,  
but a mystery to be lived.”*

Friedrich Nietzsche / Søren Kierkegaard

